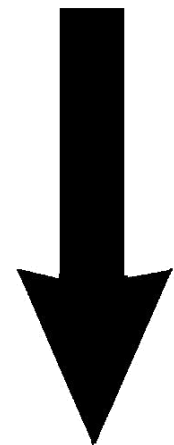
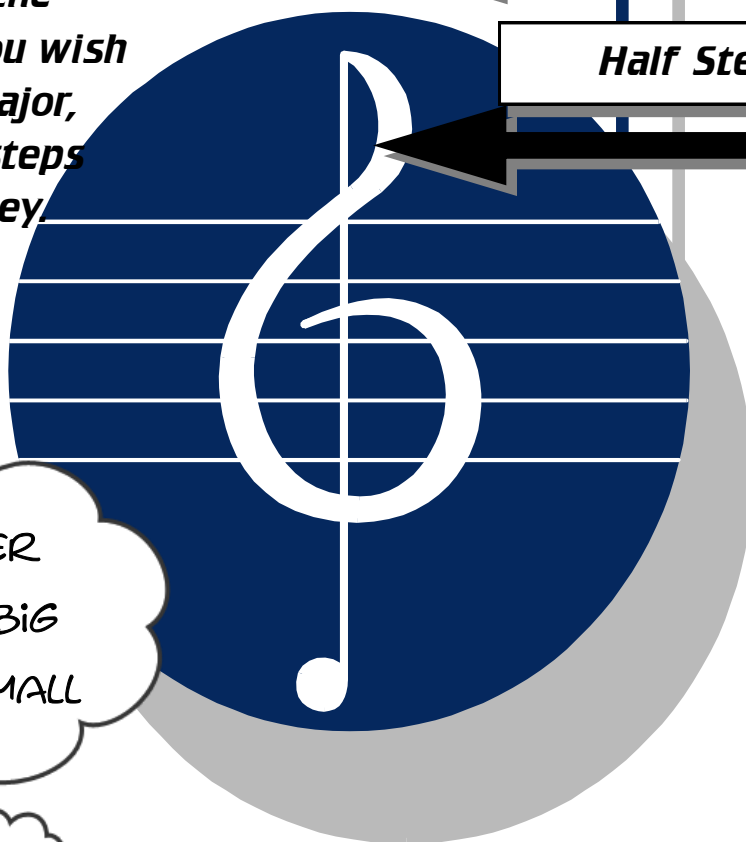
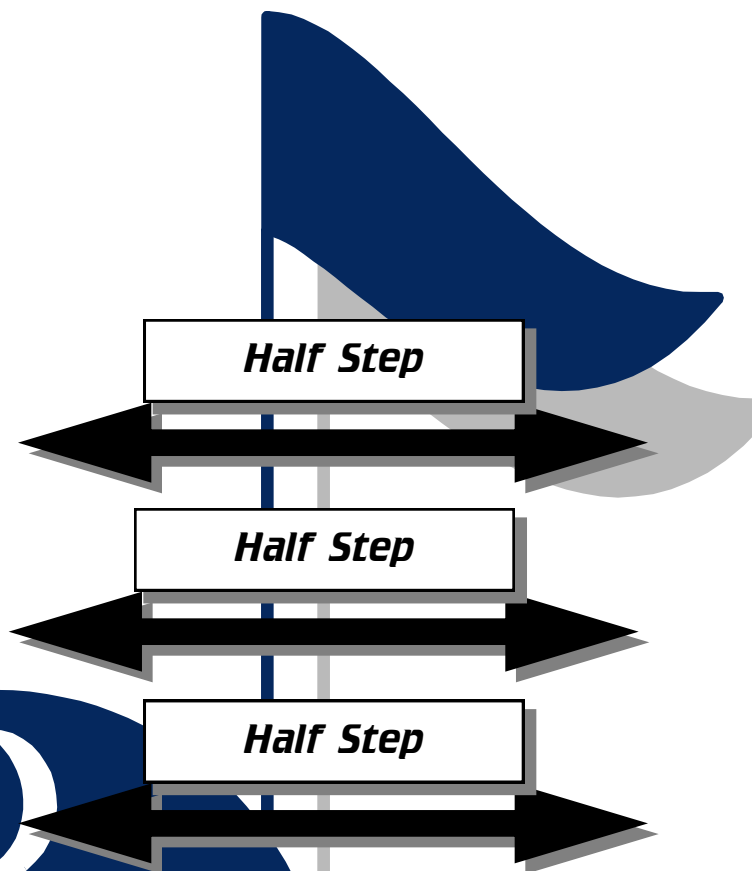


MAJOR KEY

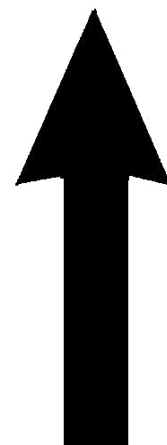


Rule: if given the major key and you wish to identify the minor, count **down** 3 half steps from the major key.

Rule: If given the minor key and you wish to identify the major, count **up** 3 half steps from the minor key.



MINOR KEY



CHORD STRUCTURE

Major Chord = M3 + m3

Minor Chord = m3 + M3

Dimished Chord = m3 + m3

Augmented Chord = M3 + M3